



Workflow Scenario Example 13

Type: Advanced Process Workflow
Department: Manufacturing

November 30th, 2019

© 2021 Aptean. All rights reserved.





Learning Objectives

Loop

Loop Groups are defined in the To-Do Group Template, the last To-Do which have been completed controls the continuation of the Loop. When the Loop is rerun, all the To-Dos will open up within the Loop.

File name Template in Document Storage

There is the possible to indicate an exact document name (e.g. Item@No.@) and furthermore, to name the place where the document should be stored (e.g. D:\ltempicture\). If a To-Do is a Document Storage, the system will prove the availability of a document within the specified directory. Once a document is determined by the system, the To-Do will be completed by default. Moreover, a linkage will be created between the document and the To-Do is deposited at the data source facultative.

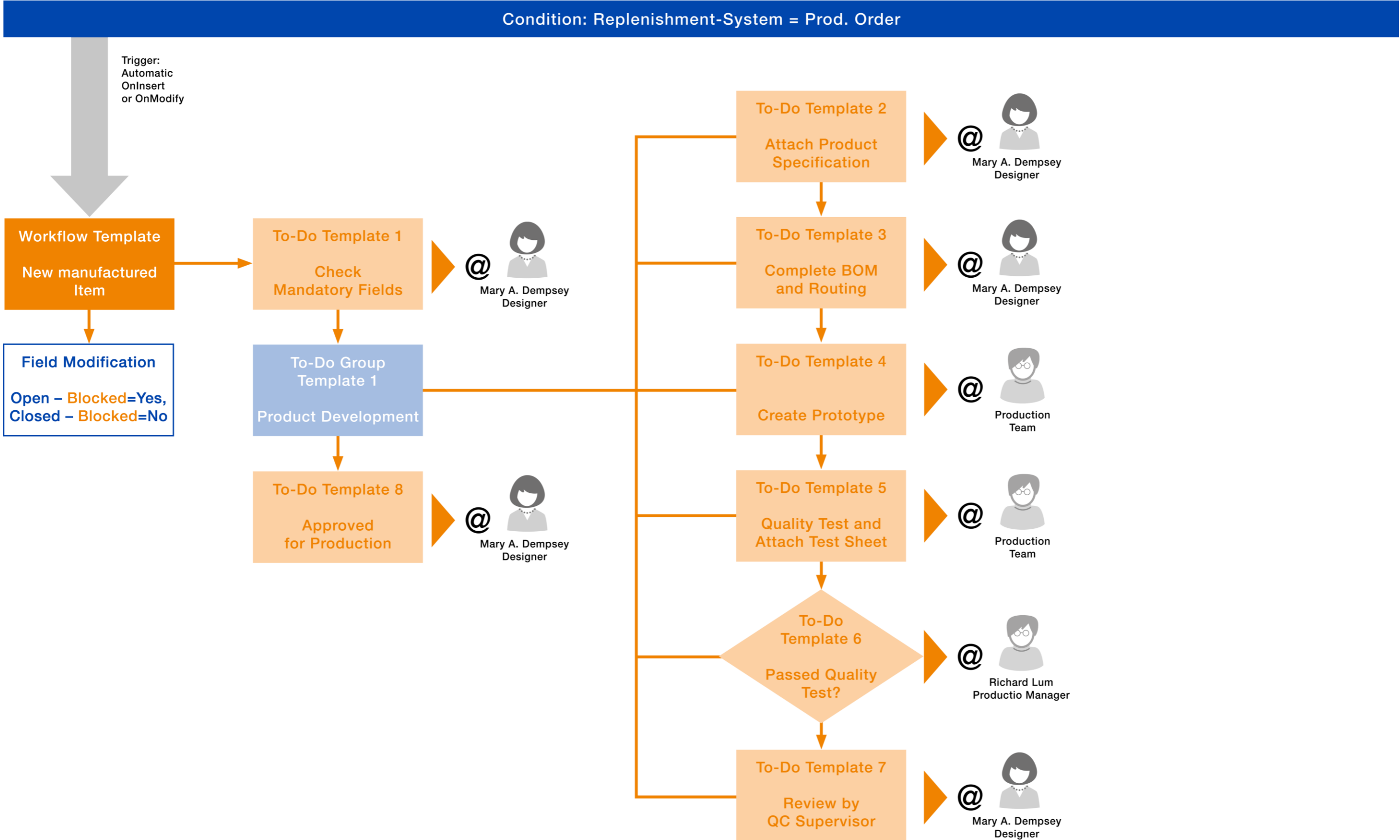
Manual Completion allowed by

If a To-Do is not a Manual Completion, this is the field where it can be decided who the person will have the authority to complete the To-Do manually.

Business Process “New Production Item“

If the designer has developed a new product, that person will check all the required fields, attaches the product specifications and completes the bill of material. Accordingly, a prototype can be created as well as tested by the Production Team and a Testing Sheet attached. If insecurities concerning the quality are detected, the Production Team can then talk to the designer about the issues. If the product has passed the quality test, the new product can be released for new production.

Aptean Advanced Workflow Diagramm





Aptean Advanced Workflow Setup

Reference Type

No.: 27 (Item)
 Editing Form ID: 30 (item Card)
 Buffer Time on Function Call Server: 30 Seconds
 Automatic Workflows: Yes
 Keyword Definitions
 Tick All Use Fields
 Table ID: 27 (Item)
 Keyword Definition Line 1
 Field ID: 1 (No.)
 Keyword Definition Line 2
 Field ID: 3 (Description)

To-Do Template

To-Do Template 1	Reference Type No: 27 (Item) Code: WF130-TD010 Description: Check Mandatory Fields
WHO	Employee Code: MD Modification allowed by (when not open): Administrator
WHY	No Activation
WHEN	Source Type: Workflow Duration Date Calculation: 1D Critical Date Calculation: -1D
WHAT	Type: Field Examination Condition Code: WF130-C010

Condition

Table ID: 27 (Item)
 Code: WF130-C010
 Description: Check Mandatory Fields
 Type: Field Examination
 All Condition Lines
 Active: Field Examinations
 Type: Field
 Table ID: 27 (Item)
 Editing Page ID: 30 (Item Card)



- Condition Line 1
 - Field ID: 3 (Description)
 - Filter: <>"
- Condition Line 2
 - Field ID: 8 (Base Unit of Measure)
 - Filter: <>"
- Condition Line 3
 - Field ID: 11 (Inventory Posting Group)
 - Filter: Finished
- Condition Line 4
 - Field ID: 99 (VAT. Prod. Posting Group)
 - Filter: VAT16
- Condition Line 5
 - Field ID: 91 (Gen. Prod. Posting Group)
 - Filter: Retail
- Condition Line 6
 - Field ID: 54 (Blocked)
 - Filter: Yes

To-Do Template 2	Reference Type No.: 27 (Item) Code: WF130-TD020 Description: Attach Product Specification
WHO	Employee Code: MD
WHY	No Activation
WHEN	Source Type: To-Do Source Code: WF130-TD010 Duration: 2D Urgency: -1D
WHAT	Type: Document Storage Attach. Doc. Type Code: PRODSPEZ [Table Join by default] Table Join Table ID: 5128007 (Workflow) Table ID to join: 27 (Item) Table Join Line 1 Field ID: 1 (No.) Value Type: Field Value: 26 (Assigned to No.)

Document Group

Reference Type: 27
 Code: ITEM DOCS
 Description: Item Document
 Directory Path Name: C:\Temp\
 Insert Record Link: Yes

File Filter:

Display Order No.: 1
 File Filter Code: PDF
 File Filter
 Code: PDF
 Description: PDF
 Filter: *.PDF



Document Type

Reference Type: 27 (Item)
 Code: PRODSPEZ
 Description: Item Specification
 Document Group: ITEM DOCS

To-Do Template

To-Do Template 3	Reference Type No.: 27 (Item) Code: WF130-TD030 Description: Complete BOM and Routing
WHO	Employee Code: MD
WHY	No Activation
WHEN	Source Type: To-Do Source Code : WF130-TD020 Duration Date Calculation: 2D Critical Date Calculation: -1D
WHAT	Type: Field Examination Condition Code: WF130-C020

Condition

Table ID: 27 (Item)
 Code: WF130-C020
 Description: Check Manufacturing Fields
 Type: Field Examination
 All Condition Lines

Active: Yes
 Type: Field
 Table ID: 27 (Item)
 Editing Page ID: 30 (Item Card)

Condition Line 1
 Field ID: 99000751 (Production BOM No.)
 Filter: <>"

Condition Line 2
 Field ID: 99000750 (Routing No.)
 Filter: <>"

Condition Line 3
 Field ID: 24 (Standard Cost)
 Filter: >0

To-Do Template 4	Reference Type No.: 27 (Item) Code: WF130-TD040 Description: Create Prototype
WHO	Team Code: Production
WHY	No Activation
WHEN	Source Type: To-Do Source Code: WF130-TD030 Duration Date Calculation: 2W Critical Date Calculation: -10D
WHAT	Type: Manual Completion



To-Do Template 5	Reference Type No.: 27 (Item) Code: WF130-TD050 Description: Quality Test and Attach Test Sheet
WHO	Team Code: Production
WHY	No Activation
WHEN	Source Type: To-Do Source Code: WF130-TD040 Duration Date Calculation: 2D Critical Date Calculation: -1D
WHAT	Type: Document Storage Attach Doc. Type Code: TEST SHEET

Document Type

Reference Type: 27 (Item)
Code: TEST SHEET
Description: Quality Test Sheet
File Name Default: @@Item%%No.@@_TEST
Document Group: ITEM DOCS

[Table Join by Default]

Table Join

Table ID: 5127903 (Attach Document)
Table ID to join: 27 (Item)
Table Join Line 1
Field ID: 1 (No.)
Value Type: Field
Value: 4 (Reference Code)

To-Do Template 6	Reference Type No.: 27 (Item) Code: WF130-TD060 Description: Passed Quality Test?
WHO	Employee Code: RL
WHY	No Activation
WHEN	Source Type: To-Do Source Code: WF130-TD050 Duration Date Calculation: 2D Critical Date Calculation: -1D
WHAT	Type: Decision Decision Option Set Code: QUALITY PASSED

Decision Option Set

Code: QUALITY PASSED
Description: Passed Quality Test?
Decision Option Set Line 1:
Value: YES
Description: Yes
Decision Option Set Line 2:
Value: NO
Description: No
Decision Option Set Line 3:
Value: MAYBE
Description: Maybe



To-Do Template 7	Reference Type No.: 27 (Item) Code: WF130-TD070 Description: Review by QC Supervisor
WHO	Employee Code: MD
WHY	By Decision Type: 27 (Item) By Decision To-Do Template Code: WF130-TD060 Decision Value Filter: MAYBE
WHEN	Source Type: To-Do Source Code: WF130-TD060 Duration Date Calculation: 1D
WHAT	Type: Manual Completion

To-Do Template 8	Reference Type No.: 27 (Item) Code: WF130-TD080 Description: Approved for Production
WHO	Employee Code: MD
WHY	By Decision Type No.: 27 (Item) By Decision Template Code: WF130-TD060 Decision Value Filter: YES
WHEN	Source Type: To-Do Source Code: WF130-TD060 Duration Date Calculation: 1D
WHAT	Type: Manual Completion

To-Do Group Template

Reference Type: 27 (Item)

Code: WF130-TDG010

Description: Product Development

[Customize This Page → FastTabs: Show "Loop"]

Loop Group Activate: Yes

Loop Group Start To-Do: WF130-TD020

Loop Group End To-Do: WF130-TD0060

Loop Group Decision Value: No

Loop Group Use Reopen Date: Yes

To-Do Group Line 1

Type: To-Do

Code: WF130-TD020

To-Do Group Line 2

Type: To-Do

Code: WF130-TD030

To-Do Group Line 3

Type: To-Do

Code: WF120-TD040

To-Do Group Line 4

Type: To-Do

Code: WF130-TD050

To-Do Group Line 5

Type: To-Do

Code: WF130-TD060



Workflow Template

Reference Type: 27 (Item)

Code: WF130

Description: New Manufactured Item Workflow

Use Condition: WF130-C030

Condition

Table ID: 27 (Item)

Code: WF130-C030

Description: New Manufactured Item

Type: Workflow Template Use

Condition Line 1

Active: Yes

Type: Field

Table ID: 27 (Item)

Field ID: 5419 (Replenishment System)

Filter: Prod. Order

Workflow Line 1

Type: To-Do

Code: WF130-TD010

Workflow Line 2

Type: To-Do Group

Code: WF130-TG010

Workflow Line 3

Type: To-Do

Code: WF130-TD080

Field Modification

Asynchronous Field Modification Line 1:

Old Status Level Filter: 0..14

New Status Level Filter: <>2

Field ID: 54 (Blocked)

Fixed Value Input: Yes

Asynchronous Field Modification Line 2:

Old Status Level Filter: 0..14

New Status Level Filter: 2

Field ID: 54 (Blocked)

Fixed Value Input: No



info@aptean.com

+1 770-351-9600

4325 Alexander Drive, Suite 100

Alpharetta, GA 30022-3740

Copyright © Aptean 2021. All Rights Reserved. These materials are provided by Aptean for informational purposes only, without representation or warranty of any kind, and Aptean shall not be liable for errors or omissions with respect to the materials. The only warranties for Aptean products and services are those set forth in the express warranty statements accompanying such products and services, if any, and nothing herein shall be construed as constituting an additional warranty. No part of this publication may be reproduced or transmitted in any form or for any purpose without the express written permission of Aptean. The information contained herein may be changed without prior notice. Some products marketed by Aptean contain proprietary software components of other software vendors. Aptean and other Aptean products and services referenced herein as well as their respective logos are registered trademarks or trademarks of Aptean or its affiliated companies. info@aptean.com